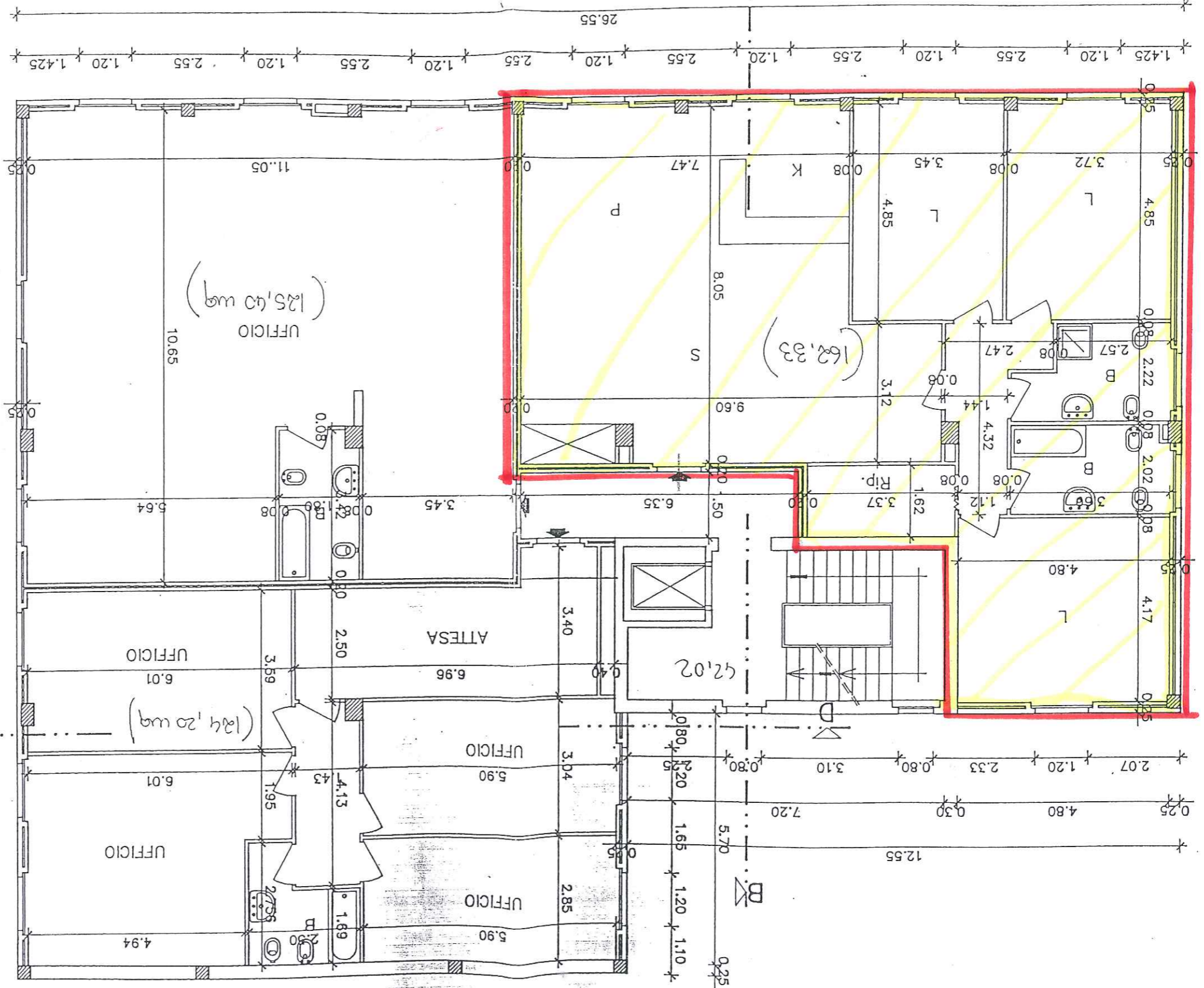


1.25 3.35 0.25 14.00 8.90 0.25

(453.95)

C

4.15 1.20 3.40 1.20 1.60 1.20 2.20 1.20 1.35 1.20 1.10 19.80



0.25 13.50 14.00

0.25 5.85 1.20 1.10 1.20 4.65 0.25 14.00 13.50 0.25